

IBI's QS-710, Quick-Screening Electrophoresis Gel Box (7x10cm) is designed for rapid linear separations of nucleic acids. It requires minimal setup and provides excellent band resolution with consistent lane-to-lane mobility for accurate results. The QS-710 is versatile for use with applications requiring quick screens, such as fragment analysis and recombinant screening, all in 30 minutes or less.

SPECIFICATIONS

	Height	Width	Length
Unit Dimensions:	6.4cm	11.4cm	22.2cm
Gel Dimensions:		7.0cm	10.0cm

CAPACITY

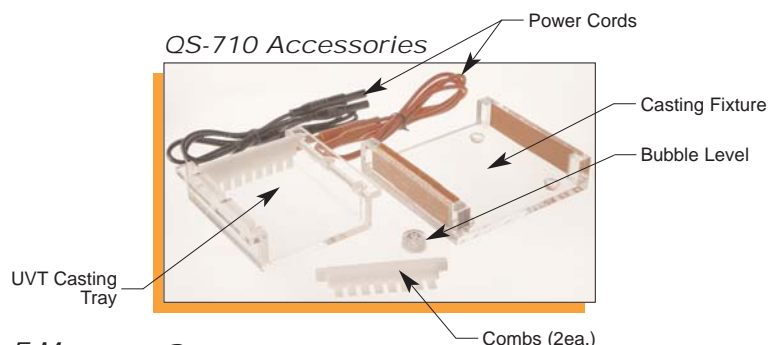
- Maximum Sample Capacity: **30 Samples** (2 Combs, 15 Samples Ea.)
- Buffer Capacity: **250ml**
- Distance Between Electrodes: **19.3cm**
- Maximum Voltage: **200V**

ACCESSORIES AND REPLACEMENT PARTS

CATALOG#	DESCRIPTION
IB51020	QS-710 UV Transmittant Casting Tray
IB51021	QS-710 Next Generation UVT Casting Tray - 3 Lanes
IB51022	QS-710 Next Generation UVT Casting Tray - 2 Lanes
IB51025	QS-710 Casting Fixture
IB51030	QS-710 Casting System (UVT Tray w/Fixture)
IB50500	Replacement Power Cords
IB50504	Replacement Bubble Level
IB50505	Replacement Tank Connector Kit
IB51200	Replacement QS-710 Tank
IB51300	Replacement QS-710 Lid
IB51305	Replacement QS-710 Electrode Assembly

ADDITIONAL COMBS AVAILABLE

CATALOG#	DESCRIPTION	WELL WIDTH	SAMPLE VOLUME PER MM GEL
IB51040	1.0mm x 8 tooth	4.7mm	4.7µl
IB51045	1.0mm x 12 tooth	2.8mm	2.8µl
IB51050	1.0mm x 15 tooth	2.2mm	2.2µl
IB51100	1.5mm x 3 tooth sets	3.0, 9.5mm	4.5, 14.3µl
IB51101	1.5mm x 2 tooth sets	3.0, 9.5mm	4.5, 14.3µl
IB51055	1.5mm x 8 tooth	4.7mm	7.0µl
IB51060	1.5mm x 12 tooth	3.0mm	4.0µl
IB51065	1.5mm x 15 tooth	2.2mm	3.3µl
IB51046	2.0mm x 12 tooth	3.0mm	6.0µl
IB51090	2.0mm x 10 tooth	4.0mm	8.0µl
IB51095	3.0mm x 6 tooth	5.8mm	17.3µl
IB51070	1.0mm, 0 marker, 1 sample	62.6mm	62.6µl
IB51075	1.0mm, 1 marker, 1 sample	4.7, 54.7mm	4.7, 54.7µl
IB51080	1.5mm, 0 marker, 1 sample	62.6mm	94.0µl
IB51085	1.5mm, 1 marker, 1 sample	4.7, 54.7mm	7.0, 82.0µl



E-MAIL: INFO@IBISCI.COM

ORDERING INFORMATION

CATALOG#	DESCRIPTION
IB51000	QS-710 ELECTROPHORESIS SYSTEM (7x10CM) *Comes complete with vented lid, UV transmittant casting tray, casting fixture, two 1.5mm x 8 tooth combs, bubble level, and power cords.

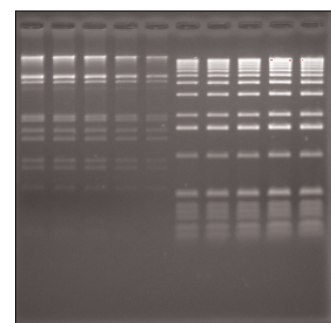


IB51000 comes complete with: Patented vented lid, UV transmittant casting tray, casting fixture, two 1.5mm x 8 tooth combs, bubble level, power cords, and operation manual.

The QS-710 has been designed by users for rapid electrophoresis. The maximum suggested applied voltage for the electrophoresis of DNA in agarose gels, using the QS-710, is 100 volts. In a 1% TBE gel, this translates into a run time of approximately 1 hour. Lower voltages may be used, of course, and as a general rule a 50 volt run will take twice as long as a 100 volt run. Higher voltages may be used to decrease the run time; however, if the unit is being operated at higher voltages the heat generated during electrophoresis may decrease sample resolution. Such artifacts may be avoided by running the unit in a cold room or by adding 1X electrophoresis buffer "ice cubes" to keep the unit properly cooled.

The suggested run parameters for the electrophoresis of RNA in agarose gels containing formaldehyde is 60-80 volts. Since the QS-710 has no capacity for buffer recirculation, the buffer from each reservoir should be collected after 1.5 hours of electrophoresis.

The IB51000 has a patented vented lid. Patent# 5,779,869.



QS-710 1% TBE Gel Run