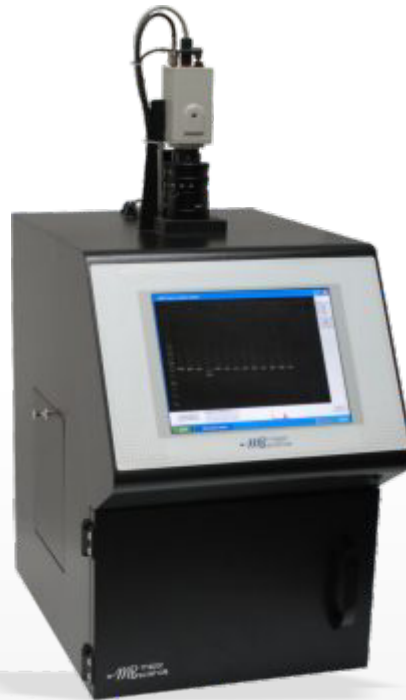


MS Compact CCD Image System

The Major Science CCD compact image system is an easy to operate, and ultra compact CCD gel documentation system. It contains a superb resolution of 10.4" built-in colorful computer touch screen display and a built in UV transilluminator supplying a complete system at one location for fluorescent imaging. This self-contained system features a scientific grade CCD camera for capturing high resolution images with simple yet versatile capture and save options. High sensitive 0.4 megapixel CCD camera is offered with the compact system. The added feature is to have both side access of the chamber to recover the gel bands easily and safely. This system can also be used for auto radiography film. Analysis software package is also offered as an option if needed.



New



Cat. No. :UVCI series

Features

- >Fluorescent imaging
- >10.4" colorful touch screen technology and built-in computer for fast, easy imaging
- >mounted USB port for saving images and transferring images
- >Compact configuration and size
- >Inner 2 x 3 watt white light LED for uniform white light illumination
- >Safety door switch
- >Connect port for thermal printer
- >Options of EtBr filter and SYBR Green filter are available
- >Convenient access on the left side for gel operation
- >Universal rated voltage: 100 ~ 240V

Software Interface

- >Capture, view, save and print images with the touch screen technology:
- >See a LIVE preview of gels, plates and colonies
- >SNAP (capture) the image
- >SAVE the image in BMP (8 bit) file format
- >PRINT to any digital printer

Transillumination

- >Photo shows the FirstLight Uniform UV illuminator
- >Different wavelength modes can be offered as options

MS image capture software



CCD Video Camera

| | |
|---------------------|---|
| Type | Composite monochrome |
| Sensor | CCD Chip |
| Max. CCD Resolution | 811 x 508 pixels |
| Pixel Density | 8 bit |
| Lens | F1.2, 8.5 ~ 51mm |
| Filters | +2 close up filter and EtBr or SYBR Green filter (optional) |
| Power | DC12V / 200mA |

Integrated Processor and LCD Monitor

| | |
|------------------------|--|
| Control Panel | 10.4" colorful touch screen |
| Camera Integration | 24x pre-set integration |
| Realtime Image Capture | manual-save images in BMP format |
| Image Storage | 4G DOM (Disk on Module) |
| Interface | Thermal printer BNC interface / Network connectivity / USB interface |

Darkroom

| | |
|----------------------------|-----------------------|
| Inner White light | 2 of 3 watt white LED |
| Safety Device | Safety door switch |
| Side Access | For cutting gels |
| Unit Dimension (W x D x H) | 350 x 530 x 670mm |
| Unit Weight | approx. 26.0kg |

Transilluminator

| | |
|---------------------------------|------------------------------|
| Built-in UV Transilluminator | 254 / 312 / 365nm (optional) |
| UV Transilluminator Filter Size | 21 x 21cm |
| Light Source | 8 watt x 6 tubes |

Touch screen



Convenient access



USB and network interface



Built-in UV transilluminator



This product is offered as a complete system for the user to perform image capture, including:

- 1 x Compact CCD Image System chamber
- 1 x CCD camera
- 1 x Zoom lens kit
- 1 x USB interface keyboard
- 1 x USB interface mouse
- 1 x Close up lens
- 1 x EtBr filter or SYBR Filter
- 1 x Built-in UV transilluminator
- 1 x Major Science image capture software disk

Ordering Information

| | |
|-----------------|--|
| UVCI-01-254 | Compact Image System with 0.4 megapixels CCD camera and built-in 254nm UV Transilluminator |
| UVCI-01-312 | Compact Image System with 0.4 megapixels CCD camera and built-in 312nm UV Transilluminator |
| UVCI-01-365 | Compact Image System with 0.4 megapixels CCD camera and built-in 365nm UV Transilluminator |
| UVCI-01-254/365 | Compact Image System with 0.4 megapixels CCD camera and built-in 254 & 365nm UV Transilluminator |
| UVCI-01-254/312 | Compact Image System with 0.4 megapixels CCD camera and built-in 254 & 312nm UV Transilluminator |
| UVCI-CLEB | Close up lens and EtBr filter for MS Compact CCD Image System |
| UVCI-CLSG | Close up lens and SYBR Green filter for MS Compact CCD Image System |
| UVCI-CL | Close up lens for MS Compact CCD Image System |
| CI-EB | EtBr filter for MS Compact CCD Image System |
| CI-SG | SYBR Green filter for MS Compact CCD Image System |
| DI-WL01 | 36 x 24cm white light plate with 30 x 20cm view dimension |
| DI-P93TW | Mitsubishi thermal printer |
| DI-UNSCAN-IT | Basic gel analysis software package |
| MUV-T254 | 8W 254nm UV lamp |
| MUV-T312 | 8W 312nm UV lamp |
| MUV-T365 | 8W 365nm UV lamp |
| MUV-F21-254/365 | 21 x 21cm filter for built-in 254 / 365nm UV Transilluminator |
| MUV-F21-312 | 21 x 21cm filter for built-in 312nm UV Transilluminator |

