

Options (Field installed must be installed by a qualified professional)

Description		Model No.
LN₂ Backup System Maintains temperature down to -80°C with liquid nitrogen.	Factory Installed	1950535
	Field Installed	1950536
CO₂ Backup System Maintains temperature down to -70°C with CO ₂	Factory Installed	1950533
	Field Installed	1950534
Ink Chart Recorder 6" (15.2cm) , seven day inkless recorder, to -150°C. Includes one red felt tip pen and box of chart paper (qty. 50)	Factory Installed	201241
	Field Installed	201240
Inkless Chart Recorder 6" (15.2cm) , seven day inkless recorder, to -150°C. Includes box of chart paper (qty. 50)	Factory Installed	201249
	Field Installed	201248
Unique Key Lock	Factory Installed	195915
PT100 Sensor Optional PT100 sensor for connection to building automation systems	Factory Installed	290199

Accessories

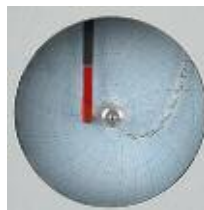
Description	Model No.
Replacement Air Filter . Pack of five filters	195890
Ink Chart Paper (pack of 50)	17020
Inkless Chart Paper (pack of 50)	180000
Replacement Back-Up Battery	400159
Red Felt Tip Chart Pen	245231
Blue Felt Tip Chart Pen	245232
Cryo Gloves Medium	4425
Cryo Gloves Large	4426
LN₂ Transfer Hose Flexible 6' metal hose. 0.5" diameter, 45° flare with swivel ends	4000401
Wall Clamp CO ₂ cylinder holder for securing tank to the wall in accordance with OSHA guidelines	950316
High-Pressure Liquid CO₂ Hose Kink-resistant, stainless steel lined, double-braided sheath. 316 stainless steel NPT F fitting. Max. working pressure 25,000 psig. 6' long	991505



Factory-Installed
Back-Up Systems



Cryo Gloves



Factory-Installed
Chart Recorder



Unique Key Lock



Chart Pens

Water-Cooled Condenser Option

The water-cooled condenser option is available on our -86°C upright and chest freezers. Your work environment stays cooler because 50% less heat is emitted to your surroundings (i.e. less BTU rejection). A water regulating valve automatically controls the water flow needed to maintain the compressor discharge pressure. Cooler compressor temperatures enhance compressor stability and reliability. Like our standard freezers, those with the water-cooled condenser options are also UL listed to Canadian and United States requirements and bear the CE mark.

Model No.	For Use With
195964	ExF240
195965	ExF320, ExF400, ExF600

The following specifications apply to tower and city water sources:*

Water Pressure and Temperature

Maximum Pressure	150 psig
Maximum Temperature	29.4°C

Connections

Inlet	0.5" compression
Outlet	0.5" compression

Water Flow Rate Required (per minute)

Tower Water	3.0 gal. (11.4L)
City Water	1.0 gal. (3.8L)

Drain Required?

Tower Water	No (return line)
City Water	Yes

Installation requires a qualified technician and should include proper adjustment of the regulating valve which controls the discharge pressure.



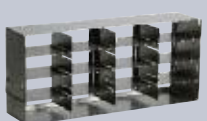



* Actual requirements may vary due to specific water pressure conditions.

Alternate Cord and Plug Options

Model. No.	Plug Description
430266	115V/20A Twist Lock Plug (NEMA L5-20P)
430267	230V/15A Twist Lock Plug (NEMA L6-15P)

Thermo Scientific Revco ExF and DxF Series

Thermo Scientific Revco ExF and DxF Series Ultra-Low Temperature Upright Freezer Racks

	Model No.	Description W x H x D in. (cm)	Freezer Vol. cu. ft. (liters)	Boxes/ Rack	Racks/ Shelf	Total Racks/ Freezer	Boxes/ Freezer
2" Box Racks							
	398332	Sliding Drawer Rack for 2" Box 5.5 x 9.4 x 16.6 (14 x 23.9 x 42.2)	13 (368)	12	4	20	240
	398331	Sliding Drawer Rack for 2" Box 5.5 x 9.4 x 22.0 (14 x 23.9 x 55.9)	17.3 (490)	16	4	20	320
			23.0 (651)	16	5	25	400
	398329	Sliding Drawer Rack for 2" Box 5.5 x 9.4 x 26.3 (14 x 23.9 x 66.8)	28.1 (793)	20	6	30	600
	398324	Adjustable Side Access Rack for 2" Box 5.4 x 9.4 x 16.5 (13.7 x 23.9 x 41.9)	13.0 (368)	12	4	20	240
	398326	Adjustable Side Access Rack for 2" Box 5.4 x 9.4 x 22.1 (13.7 x 23.9 x 62.5)	17.3 (490)	16	4	20	320
			23.0 (651)	16	5	25	400
3" Box Racks							
	920099	Sliding Drawer Rack for 3" Box 5.5 x 9.5 x 17.4 (14 x 24 x 44.2)	13.0 (368)	9	4	20	180
	398330	Sliding Drawer Rack for 3" Box 5.5 x 9.5 x 22 (14 x 24 x 55.9)	17.3 (490)	12	4	20	240
			23.0 (651)	12	5	25	300
	398328	Sliding Drawer Rack for 3" Box 5.5 x 9.5 x 26.3 (14 x 24 x 66.8)	28.8 (815)	15	6	30	450
	398325	Side Access Rack for 3" Box 5.4 x 9.4 x 16.1 (13.7 x 23.9 x 41.9)	13.0 (368)	9	4	20	180
	398327	Side Access Rack for 3" Box 5.4 x 9.4 x 22.1 (13.7 x 23.9 x 56.1)	17.3 (490)	12	4	20	240
			23.0 (651)	12	5	25	300

Shelf Kits Box inventory kits including sliding drawer racks and 2" boxes with 100 cell dividers

Model No.	Freezer	Racks Included	Boxes Included
RSK13SD5	13 (368.1)	4	48
RSK17SD5	17.3 (489.9)	4	64
RSK23SD5	23 (651.3)	5	80
RSK600SD5	28.8 (815.1)	6	120